

# Kankakee, Illinois Uses AVEVA Insight to Efficiently Monitor Remote Lift Stations



## Challenge

The City of Kankakee, Illinois Environmental Services Utility oversees 14 lift stations in remote areas of Kankakee County. In situations such as peak flow periods, the number of pumps used or failure of a pump could lead to sanitary sewer overflow - the discharge of raw sewage into the environment. This makes remote monitoring of the lift stations absolutely critical for the environmental Services Utility Team.

Due to limited visibility, employees were not able to readily identify potential lift station issues without performing a spot check at each station. At times, an issue would arise and it would be two to three days before it was identified. With such a manual monitoring process, a catastrophic failure could easily have gone unnoticed.

## Solution

To establish more proactive error recognition, AVEVA InTouch HMI now pushes lift station data directly to AVEVA Insight in a live news feed. In addition, AVEVA Insight app provides employees with visibility to the performance data directly from their mobile device. Now when a situation occurs, alarms trigger a callout via WIN-911 to a designated team member. That individual can then pinpoint the potential issue remotely using the AVEVA Insight interface before even arriving at the station.

## Results

The solution affords Kankakee's Services Utility Team greater operational efficiency through automated notification and identification of potential lift station issues based on mobile visualization of the data.

*See screenshots of the solution on the next page.*



## Customer

- City of Kankakee, IL

## Industry

- Water & Wastewater

## Solutions

- AVEVA Insight
- AVEVA InTouch HMI
- WIN-911

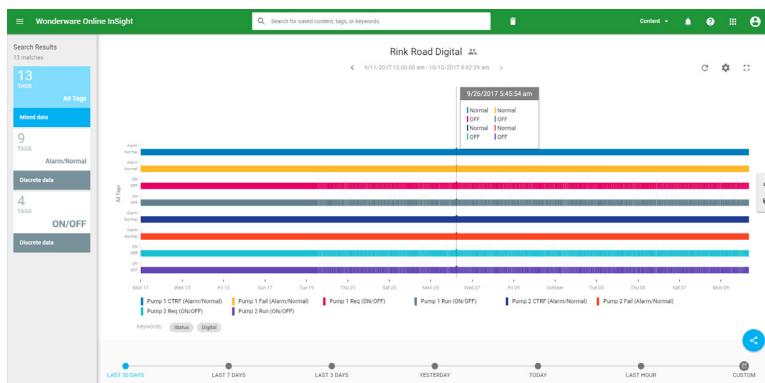
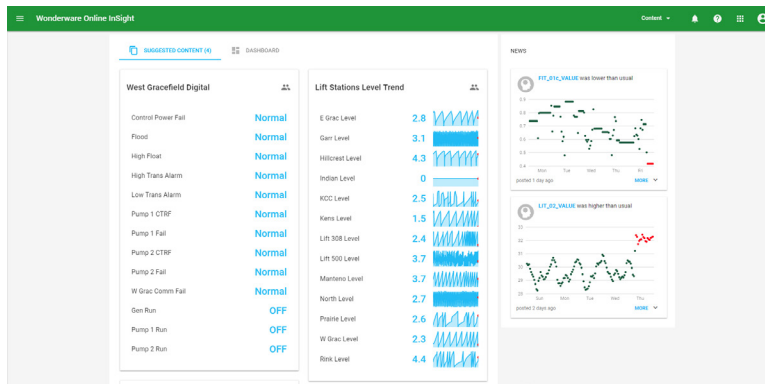
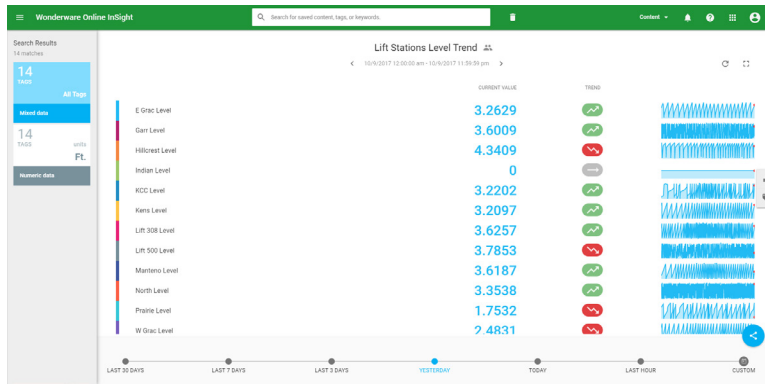
## Business Results

- Proactive Error Recognition
- Enhanced Visibility to Performance Data
- Operational Efficiency

## Screenshots

City of Kankakee uses AVEVA Insight to monitor its 14 lift stations. Screenshots of the solution are provided below.

(Note: AVEVA Insight was formerly Wonderware Online InSight)



## About the City of Kankakee

Kankakee is a historic, vibrant and active riverfront community in Northern Illinois.

[citykankakee-il.gov/](http://citykankakee-il.gov/)

## About GS PlantOptics

GS PlantOptics, formerly Wonderware Midwest, is the AVEVA Select channel partner serving the upper Midwest with local sales and technical services for the full AVEVA Software portfolio.